

PART OF NE 1/4, SEC. 32, T.7N., R.2W., S.L.B. & M.

PLAIN CITY  
BLOCK 11, PLAT A

TAXING UNIT: 21

SCALE 1" = 50'

SEE PAGE 38

14

2500

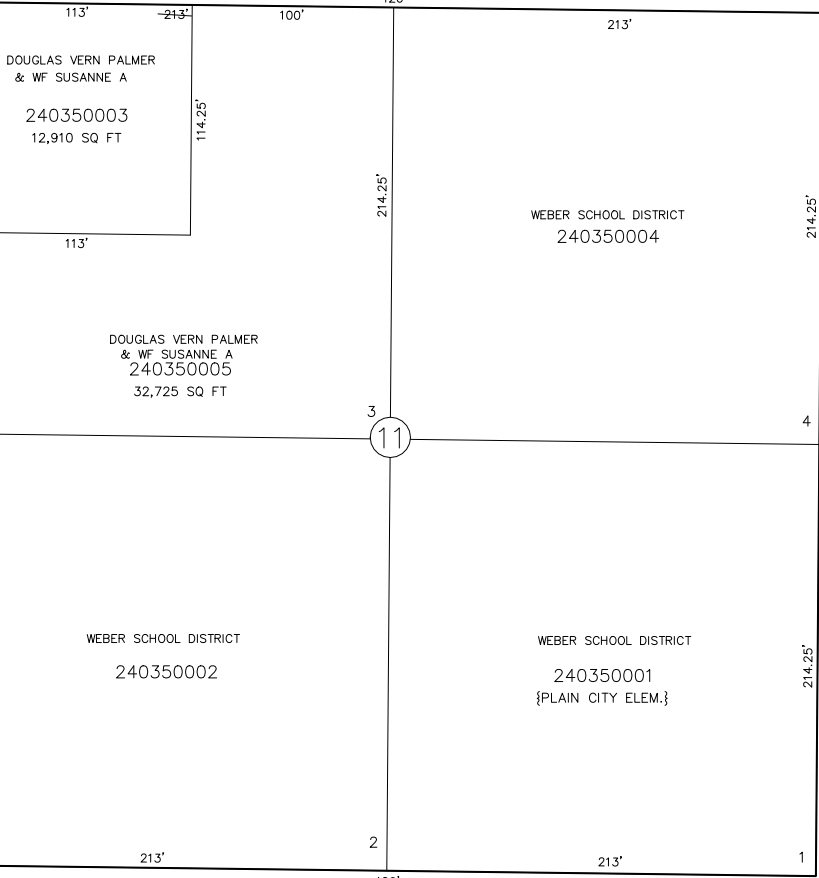
NORTH

STREET

S 89°17' E

WEST STREET

WEST STREET



SEE PAGE 34

10

SEE PAGE 36

12

8

SEE PAGE 32

SEE ORIGINAL DEDICATION  
PLAT OF PLAIN CITY IN  
BOOK 5, PAGE 80 OF RECORDS.